

SLIPPERY ROCK CAMPGROUND

1150 West Park Rd, Slippery Rock, PA 16057

Office Phone: 724-738-0402 Fax: 724-738-0776

Website: www.toursrc.com

Winter Hours: Tues - Sat 8:00 AM - 4:30 PM

NEWSLETTER – OCTOBER 2010



GATE VOLUNTEERS – an important job?

Being a “Gate Volunteer” helps SRCA in many ways!

1. The office staff: by allowing them to do their job without watching the gate and dealing with everything.
2. The members: by letting in their guests that are on their guest gate card so they do not have to come down and let them in.
3. The store: by letting in the vendors so the store does not have to be responsible for letting them in.
4. Passing out the handouts so that our members get all the information.
5. A friendly face to say good morning or good afternoon to, and if the line is not too long, chat a little.

The list could go on and on. The gate house has air conditioning, a refrigerator, semi-comfortable chairs and a sweeper (if you like to clean). All the comforts of home except a “Mr. John”, maybe we need to give that some thought

Next year we will need gate folks to work from Memorial Day through Labor Day. The shifts are set up for 2 hours each: Sunday through Thursday from 10:00 AM to 4:00 PM; Friday and Saturday from 10:00 AM through 8:00 PM. We had difficulty this year getting volunteers on Friday to keep it open until 8:00 PM.

We need some new interest in volunteering at the gate for next season. Some of our people have moved away and some have just moved to the substitute list. We do have a Sub-List and our subs have been very helpful this year. Please give it some thought over the winter and see if you have 2 hours to volunteer at SRCA’s Gate next year. If interested, please let the office know. We start working on the list of workers early in May so we are ready by Memorial Day.

PS If you need a day off at any time, we do not dock your pay, but we will find a sub for you. Thanks to all who worked this year, all went very well.

Bill and Barb Moore - B264

SRCA Newsletter 2010 Vendor Sponsors

Please support our Vendors. They are paying for our Newsletters.

Awnings By Paul

8262 Vivian Dr.
Pittsburgh, PA 15237
Phone: 412-901-5298 Fax: 724-416-6866
Type of Business: Awnings

B & J Golf Cart & Trailer Sales

317 Camp Horne Rd.
Pittsburgh, PA 15202
Phone: 412-977-9449 or 412-445-6016
Type of Business: Utility Trailers, New & Used
Golf Carts, Sales & Svc, Parts & Accessories

Carl S. Rodgers, Jr. Hauling

1016 West Liberty Rd.
Slippery Rock, PA 16057
Phone: 724-794-5589 Cell: 724-333-1030
Type of Business: Hauling Wood, Limestone,
Gravel, Top Soil, Replace Roofs and
Concrete Pads

Dennis Groskey Agency

425 E. Water St.
Slippery Rock, PA 16057
Phone: 724-794-4820 Fax: 724-794-5046
Type of Business: Notary Public, Title Transfers/
Foremost Insurance

Dennis Trailers Inc.

989 Old Route 8
Harrisville, PA 16058
Phone: 814-786-7959 Fax: 814-786-7031
Type of Business: Notary Public, Title Transfers/
Repairs, Service, Winterizing, Awnings, A/C
Appliances

Golf Carts Unlimited LLC

4493 Harlansburg Rd.
Slippery Rock, PA 16057
Phone: 724-530-2100 Fax: 724-530-2101
Type of Business: Golf Cart Sales,
Service, Parts, Rentals

Hi-Tide Power Wash

129 Enger Ave
Pittsburgh, PA 15214
Phone: 412-400-9989
Type of Business: Power Washing

Inergy / Steinhauser Propane

19 Grant Avenue
Butler, PA 16002
Phone: 724-282-1759 Fax: 724-282-1348
Type of Business: Propane Sales

K&K Parts LLC

923 New Castle Rd., Route 422
Butler, PA 16001
Phone: 724-865-9006 Fax: 728-865-9842
Type of Business: RV & Mobile Home Supplies

Giant Eagle / Little Eagle Assoc.

223 Grove City Rd.
Slippery Rock, PA 16057
Phone: 724-794-5040 Fax: 724-794-6378
Type of Business: Supermarket

Martin Construction

1356 Porter Rd.
Harrisville, PA 16038
Phone: 724-290-1757
Type of Business: Concrete, retaining walls
skirting, landscaping

Powell's Trucking and Excavation

680 Springfield Church Rd.
Grove City, PA 16127
Phone: 724-290-5556 Fax: 724-748-4541
Type of Business: Excavating, Hauling

Shaffer Tree Service

515 Knox Avenue
New Castle, PA 16101
Phone: 724-658-1060 Fax: 724-658-0640
Type of Business: Tree & Stump Removal, Trimming

Tri County Propane

428 Glendale Rd.
Beaver Falls, PA 15010
Phone: 724-843-0983 Fax: 724-843-0983
Type of Business: Propane Delivery Service

Unique Full Glass Service

PO Box 603, 107 GR Lane
Slippery Rock, PA 16057
Phone: 724-794-9900 Fax: 724-794-6640
Type of Business: Glass service, windows, doors, screens
Email Address: UniqueBGrossman@aol.com

Weege's Pizza

187 Harmony Rd.
Slippery Rock, PA 16057
Phone: 724-794-5600
Type of Business: Pizza, Hoagies, Salads, Wings, Burgers,
calzones, Philly Steak Sandwich, and much, much more

Withers Golf Car

410 Heckathorne Rd.
New Castle, PA 16101
Phone: 724-656-9076
Type of Business: Sales & Service of golf carts

Zanotti Golf Cars

170 Pittsburgh Road
Butler, PA 16001
Phone: 724-283-2777 x 118 Fax: 724-283-0383
Type of Business: Sales, Parts, Service, Rentals
Web Site: www.zanottimotor.com



TWENTY-FIFTH ANNIVERSARY CELEBRATION

Since this is the first newsletter following our 25th Anniversary Celebration, I would like to take this time to thank all the members who donated money or their time and talent to this project!!!! We had wonderful weather and everyone seemed to enjoy themselves! I am sure some folks were concerned that we wouldn't be able to coordinate all of the activities, but we were blessed with everyone's cooperation. I have been told by many that the fireworks were some of the best they had seen.

Janice Moore, Anniversary Party Chairman - B254



RECYCLING:



It's that time of the year again to remind everyone about the leaf recycling program that we have. We are asking for your help by bagging your leaves (**no garbage please**) and taking them up near the dumpster to the leaf wagon. That's all you need to do. The maintenance guys will add them to the leaf composting area, and as they break down and decompose we will eventually have some good soil available to the members for their use. Thank you for your cooperation and participation in this recycling program since it really helps to save money on the cost of having our garbage removed from the campground.

Janice Moore, Special Projects Chairman - B254



2011 PITTSBURGH RV SHOW:

The 2011 RV Show will be held January 8th through 16th at the Pittsburgh Convention Center. I am currently organizing the schedule for the volunteers working the show and will contact you later with details. Be sure to stop by SRCA's booth and say "HI" if you are at the show! Monday and Tuesday are buy one adult ticket at \$10 get one free. Show times are Monday through Friday 5pm – 9pm, Saturday 10am – 9pm, and Sunday 10am – 5pm. See our campground website for a link to get a \$1.00 off admission coupon of regular price.

Judi Olack, Membership Committee Chairman – A113

SLIPPERY ROCK CAMPGROUND

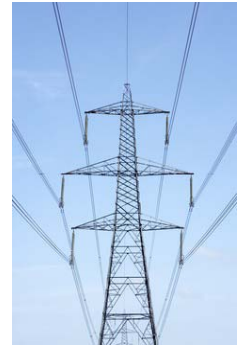
Sweatshirts ~ T-Shirt ~ Golf Shirts ~ Jackets ~ Hoodies
Several styles ~ colors ~ sizes

Stop in the office and buy yours today! Makes a great gift!

Birthdays ~ Anniversaries ~ Holidays ~ or just buy it for yourself ~ you deserve it!



ELECTRIC UTILITY COSTS



Electricity Deregulation Comes to Pennsylvania

As some of you might know starting in January, 2011 electricity generation will be deregulated in the state of Pennsylvania.

In 1996, Pennsylvania residents paid electricity prices about 15 percent above the national average. Legislators responded by restructuring the generation of electricity (about 60 percent of users' bills) to encourage more competition.

This reorganization of the generation component often is referred to as deregulation, even though the generation industry is far from unregulated. The transmission and distribution of electricity remain unchanged and regulated by the state. In an effort to move from nine entrenched regional monopolies to a competitive electricity market, lawmakers implemented a transition period that included rate caps for consumers and recovery of "stranded costs" for providers, apparently to pay for previous infrastructure investments. Rate caps were instituted to protect customers from unpredictable price fluctuations during the transition period. In return for the loss of their monopoly status, utilities were allowed to collect a surcharge above the price of electricity, otherwise known as stranded costs. Rate caps already have expired for six utilities statewide, and the transition period will end for all state utilities in 2011 -- ending the rate caps and the collection of stranded costs.

So what does all this mean to us at SRCA? It means that we have to be diligent and do our homework or we are going to be caught up in the horror stories of what happened in California with real-time pricing and day-ahead markets that can fluctuate at a variable rate which could mean much higher pricing for our electrical generation cost. As I write this our electric cost will reach or surpass the \$200,000 mark for our annual electric cost ending September, 2010. This is why I have signed an agreement with Allegheny Power to be included in the bid process to get "the best price available" at a fixed rate for 2011. We are not committed to accept this rate and that is why I am also actively pursuing an electric supply broker to help us join a consortium to obtain a better rate for an extended period. But this is not the only thing we can do for our "best practices" -- we all must learn to **CONSERVE** electric usage while at Slippery Rock Campground.

Having just celebrated our 25th anniversary as an Association we realize that our park is not young any longer and neither are the utilities. The park was originally constructed to handle pop-up trailers, tents, and a few travel trailers and motor homes, nothing like what we see today. We now have mini homes with 2-ton A/C units, microwave ovens, big screen TV sets, full size refrigerators, hairdryers, and on and on. Basically our electric supply can not handle this type of load on busy weekends and we are left with electric blow-outs caused by the old aluminum wiring that is buried in the ground and transformers that are over 25 years old.

ELECTRIC UTILITY COSTS (continued)

I have been given budgetary numbers to upgrade the electrical supply distribution for the park and it would cost one million dollars or more. That would mean roughly a one thousand dollar assessment for each site. I certainly don't want to see that and I am sure most of you don't either. So what are the options? As I mentioned earlier, we all need to learn to **CONSERVE** electric while at Slippery Rock Campground. We can continue to keep our head in the sand and hope that everything "just works out" or we can become proactive and continue to explore ways in which we can address this issue that is not going to fix itself. So I urge all of us to stay focused on keeping our electrical needs to a conservative minimum while at Slippery Rock Campground.

Richard Graham, Vice President, Slippery Rock Campground Association – A281

CAMPGROUND EVACUATION PLAN *requested by Butler County:*

Butler County authorities have requested that all Worth Township residents be part of an organized evacuation plan. We at SRCA have been commanded by Worth Township officials to assemble an evacuation plan to be submitted to them as soon as possible. As with any governmental agency there are many forms and stipulations that are associated with a venture like this so we must have a group effort to obtain this goal. As you can imagine, having several thousand people at our campground on a busy weekend can be a monumental task for complete evacuation. We are asking that anyone who is willing to help at any level to please step forward and volunteer for this project. I will be heading up a team of individuals to oversee the many phases of this project, so any help from the wealth of talent that we have at our campground would be greatly appreciated. Thank You.

Richard Graham, Vice President, Slippery Rock Campground Association – A281



CRAFT SHOW:

The annual SRCA Craft Show was held on July 31st at the Rec Hall. A good time was had by all! A big **THANK YOU** goes out to all who helped set up on Friday evening, to all those members who participated, and, of course, to our shoppers. We had a nice variety of items from very talented folks!

Virginia Allen – D095

THANK YOU:

I just wanted to say thank you to the B Section members for their support and re-election to the Board of Directors.

Janice Moore, B Section Director - B254

PICKLEBALL NOTES:

Even though this note is late, I wanted to thank those who helped me line off the second pickleball court. Joyce Hobaugh, Maureen Grimm and Redo Celli worked hard (in the heat) to double our playing potential!

We appreciate everyone who has come to play – both young and old! We look forward to even more folks enjoying this great game next year.

Howard Allen – D095

For those who don't know the game, here is a definition from the internet: Pickleball is a relatively new racquet sport which combines elements of badminton, tennis, and table tennis. The sport is played on a court with the same dimensions as a badminton court. The net is lower than most other racquet sports allowing for faster play. The game is played with a hard paddle and a wiffle ball, making the technique required for pickleball different than other sports.



SRCA GOLF LEAGUE:

The gold league season began on May 28th and sadly came to a close on September 24th. We were able to get in 18 weeks of great golf and a lot of fun. The high point of the season was our scramble at Pine Lakes on August 30th. Following the scramble, we had dinner and awards were given. The winning team consisted of Larry Healy, Bob Rushwin, Rich Vogel, and a last minute free agent Tom Stewart. It turned out that Tom was a ringer and carried the day for his team.

Our membership grew this year and we are hoping the trend continues into the 2011 season. Plans are already in the making for next season's schedule. We play at different courses every Friday morning at 9:00 am. Our format is very low key and our main objective is to have a good time. Many thanks go to the additional help this season supplied by Bob Rushwin, Ralph Deemer, Tom Stewart, and Barry Wiles. Hope to see everyone, plus a few new members, back in the spring.

Bill Gross – D150

THANK YOU:

Thank you to Section D members for your support during the recent election. I am honored to be your representative and I promise to represent everyone in Section D to the best of my abilities. Email is the best line of communication for me. My email address is: d2@toursrc.com.

Jack O'Leary, D Section Director - D048



MEMORIAL DAY PROGRAM 2011:

The committee for the 2011 Memorial Day Program has gotten an early start to put a program together for next May. There are a few needs that we are looking for.

We are in need of 13 Boy Scouts to put on a "Flag Retirement Program". If you have a son, grandson, relative or friend that is a Scout and would be able to participate, please call the office (724-738-0402) and let the staff know that you have someone that can help us out. We will have leadership for these Scouts to explain what to do.

Do you own a horse with a rider that you are willing to bring to the park? If so, please let the office know and you will be contacted as to what our thoughts are.

If you have something that you think we could use in a program (play taps, in a drum and bugle corp., play a fife (flute), I am sure you get the idea – please help us out and call the office so a committee member can call you back. SRCA is very lucky to have so many talented people as members and family of members. If you know of someone, or you yourself can help, just let us know. Rich Graham is the Chairperson of this Committee.

Barb Moore, Committee Member – B264

RECREATION COMMITTEE:

I would like to thank everyone who helped with the Recreation Committee this past year. The recreation committee met early September and a tentative schedule was made for next year. Any new ideas for activities are welcome. New volunteers to help with the functions are always welcome. There are sign-up sheets in the office. I hope everyone has a safe and happy winter. See you in the spring.

Warren Moik, Recreation Committee Chairman – C212



MEMBERSHIP COMMITTEE:

I would like to thank all who volunteered on the Membership Committee for the 2010 season. Many of you have spent *numerous* hours traveling around the campground to share with visitors just what a great park we have! Your dedication and love of SRCA have shown in the outstanding number of transfers and rentals we have had this year. A special thank you to Barb Moore for also keeping the "For Sale" book up-to-date!

Have a safe winter and we'll see you all in the spring!!

Judi Olack, Membership Committee Chairman, A113

FEED THE NEED:

Most arrive at SRCA with the intent of leaving the outside world outside and just kickin' back for a relaxing escape. However, there are those who just can't seem to sever all ties even though they have entered paradise. You've seen them. They huddle at the pavilion by the ponds or around the office, hunched over their laptops, checking emails and googling the Internet.

Have you ever seen Internet withdrawal? It's not pretty, so rather than fighting the compulsion, we decided to feed the need. In August, SRCA activated a WIFI hotspot. The hotspot is located at the office and provides users with connection to the Internet. Over the past two months, 107 members have tried the hotspot. To offset the expense associated with the hotspot, the connection is provided on a fee-for-service. Users set up their accounts and pay for the connection on-line.

In an effort to determine the demand for expanding WIFI to other areas of the campground, a survey has been created and posted on the web site. To date, we have received sixty-six (66) responses to the survey. If you are interested in WIFI service in the campground and have not yet responded to the survey, you can do so by accessing the *Current Survey* page under Member Services on the web site (www.toursrc.com), or filling out a paper copy of the survey at the office.

Oh, and if you don't know what a hotspot is, that's OK. SRCA can be enjoyed quite nicely without the Internet, or so they say.

Jim McClintock - B110

THOUGHTS AND PRAYERS:

Joan Gruntz C-011 passed away on Monday, August 23rd. She had lived with her daughter, Kathy, and was a member of Slippery Rock Campground for 16 years. She had many family members and friends throughout the campground. For some who do not know who Joan is, she's the lady who loved and was crazy about "Elvis". Thank you for keeping Joan in your thoughts and prayers.

Her Loving Family

SECURITY:

Hello Campers! I would like to start off by thanking each and every one of you for helping to ensure that our campground is a safe and peaceful environment to live in. It has been a pleasure working as head of security this season, not only because the atmosphere is friendly, but because you have accepted me into the SRCA family. Everyone here has shown me support and great hospitality.

As we approach winter, I would just like to remind everyone to make sure everything is locked up tight before your departure. Also, maintaining a 12 mph speed limit is crucial during winter hour to prevent accidents due to hazardous road conditions. Lastly, please remember to abide by our electric usage rules for the off season. Any questions or comments can be made personally or by filling out a "Write It Down" form located in the main office.

Matt Fandozzi – Head of Security

FROM OUR MANAGER:

Another season is coming to a close and I have to say this was the busiest season that I can remember in all of the years that I have been here. I want to thank all of the volunteers for all of your hard work. Without you this campground would not be as wonderful as it is.

We have a new storage area up by the maintenance building that our staff has put together to house metal so that we can take it to salvage. If you have metal that you are looking to get rid of, it must be put inside this storage area. You are not permitted to just set it up on the ground like everyone used to do. There is a list of accepted material on the door. Please do not deviate from this list. If you have any item that you're not sure how to get rid of, ask me and I will attempt to assist you with disposal. Let's keep the area up next to the dumpster looking good to the travelers going up 79.

The Annual Dues Invoices have been sent, along with a form that you need to sign and return to the office with your signature. If you have not received your invoice, please give the office a call and we will check to make sure that we have current mailing information.

Remember winter office hours took affect October 1. We are now closed on Sundays and Mondays. Have a safe and healthy winter season. I am already looking forward to spring.

Diane Falvo, Manager

OUR DEEPEST SYMPATHY: To the family and friends on the recent passing of the following members:

*Mary Eimiller - B235 - June 21st
Richard Baker - B242 - July 29th
Joan Gruntz - C011- August 23rd
Jim Kiser - B271- September 25th*